

510

PERSONALIZED HUMANITARIAN
AID THROUGH BIG DATA



AN INITIATIVE OF THE NETHERLANDS RED CROSS



510 million squared kilometers is the total surface of the earth

510

PERSONALIZED HUMANITARIAN
AID THROUGH BIG DATA

Mission

Shape the future of humanitarian aid by converting data into understanding, and put it in the hands of humanitarian relief workers, decision makers and people affected, so that they can better prepare for and cope with disasters and crises.



Put the most vulnerable people on the map





MISSING MAPS

2 year update



Community stats:

18,000
contributors

430
public mapathons

140
mapathons during
GeoWeek 2016

30,000
slices of pizza eaten



Select achievements:

29 million
people mapped

450,000
km² mapped

5.6 million
buildings mapped

72,000
km traveled during
field mapping

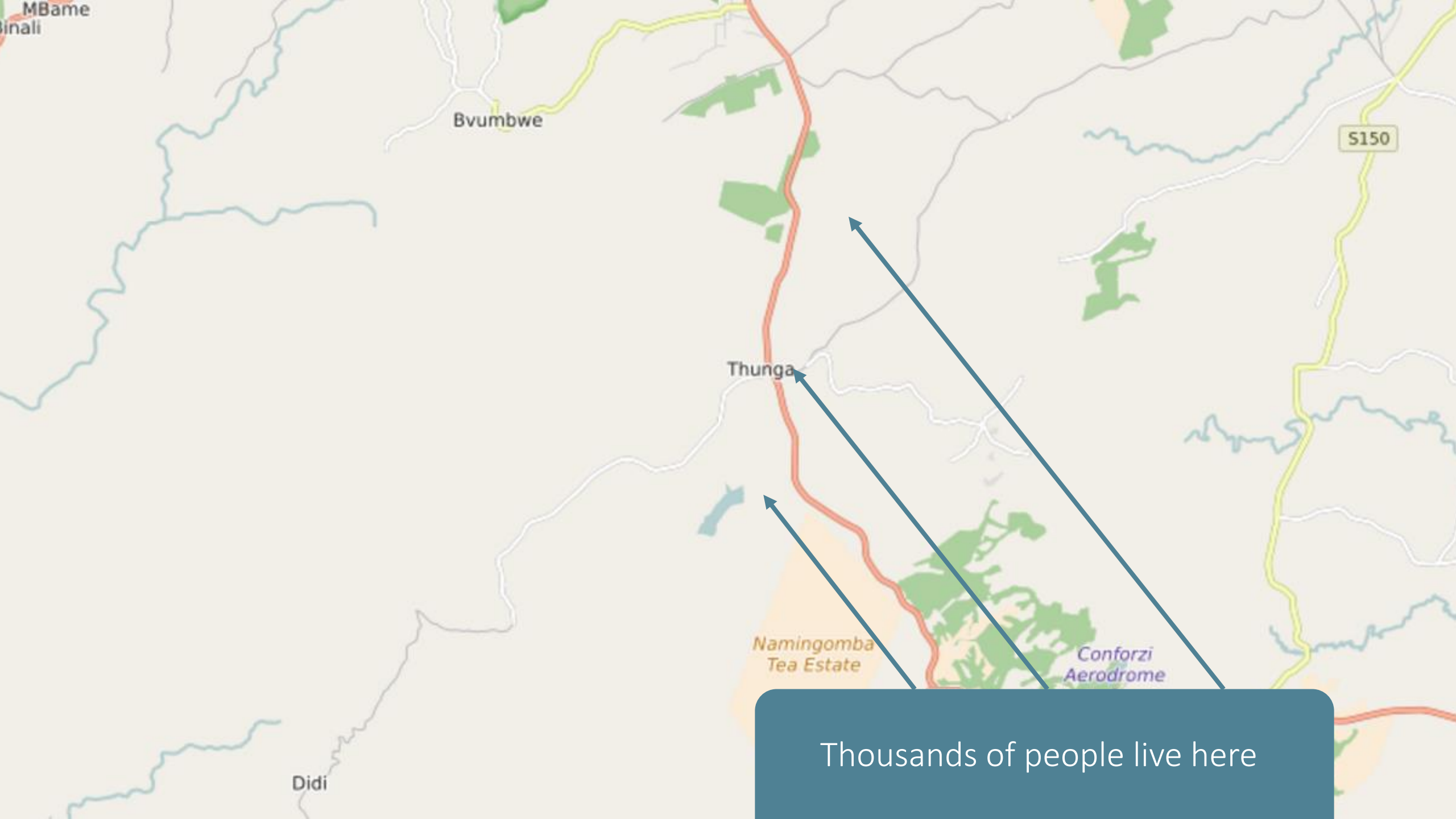




Map all roads and buildings in
Malawi?



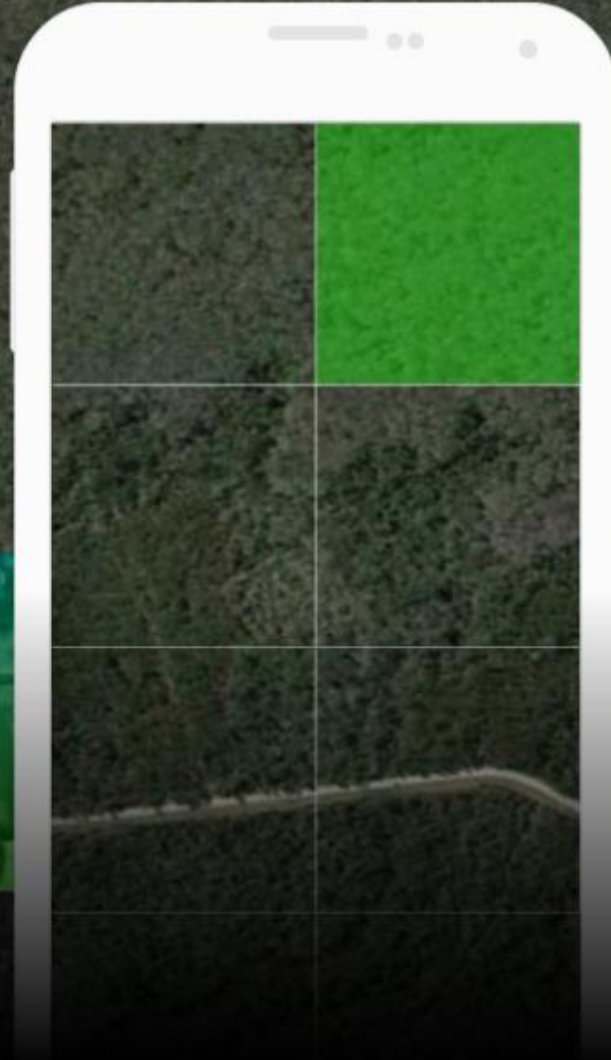
Thunga GVH in Malawi



Thousands of people live here



MapSwipe



With every swipe and tap, you
help put families on the map

We work with digital volunteers
to collect and analyze data



#2381 - Missing Maps - Malawi - Southern areas

Omschrijving Instructies Deelnemen Activiteit Statistieken

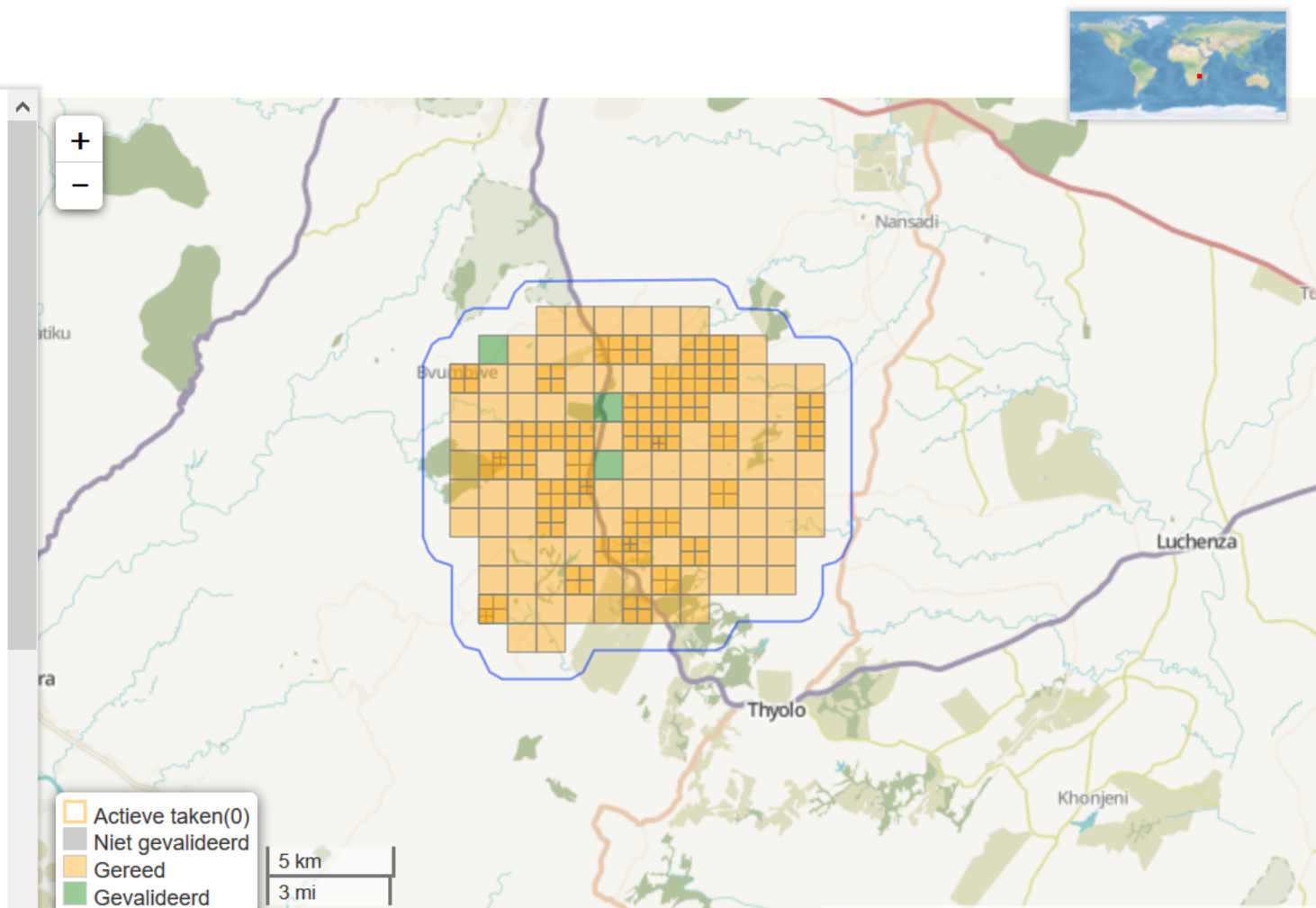
- Author: **Missing Maps**
- Requesting organization: **Netherlands Red Cross**
- Priority: **Medium**

Through this mapping task the Netherlands Red Cross supports the Malawi Red Cross Society to:

- reduce the prevalence of **diarrhoeal diseases** in the target communities of Phalombe.
- enhance **resilience** and building institutional disaster response capacity training for the people of Malawi
- **raise awareness** within vulnerable communities in disaster prone areas of the possible dangers of natural disasters.
- improve the delivery of **sustainable water supply, sanitation and hygiene** services in 9 low-income areas
- respond to a **food crisis** to meet drought affected population's food and nutrition needs through cash transfer.

Mapping efforts are coordinated with local government / members of the HOT/OSM community in Malawi.

The Missing Maps project aims to map the most vulnerable places in the world (affected by humanitarian crises: disease epidemics, conflict, natural disasters, poverty, environmental crises). Building on HOT's disaster preparedness projects, the



The Humanitarian Openstreetmap Tasking manager, to let volunteers coordinate efforts

We collect data on
key locations by mobile
technology

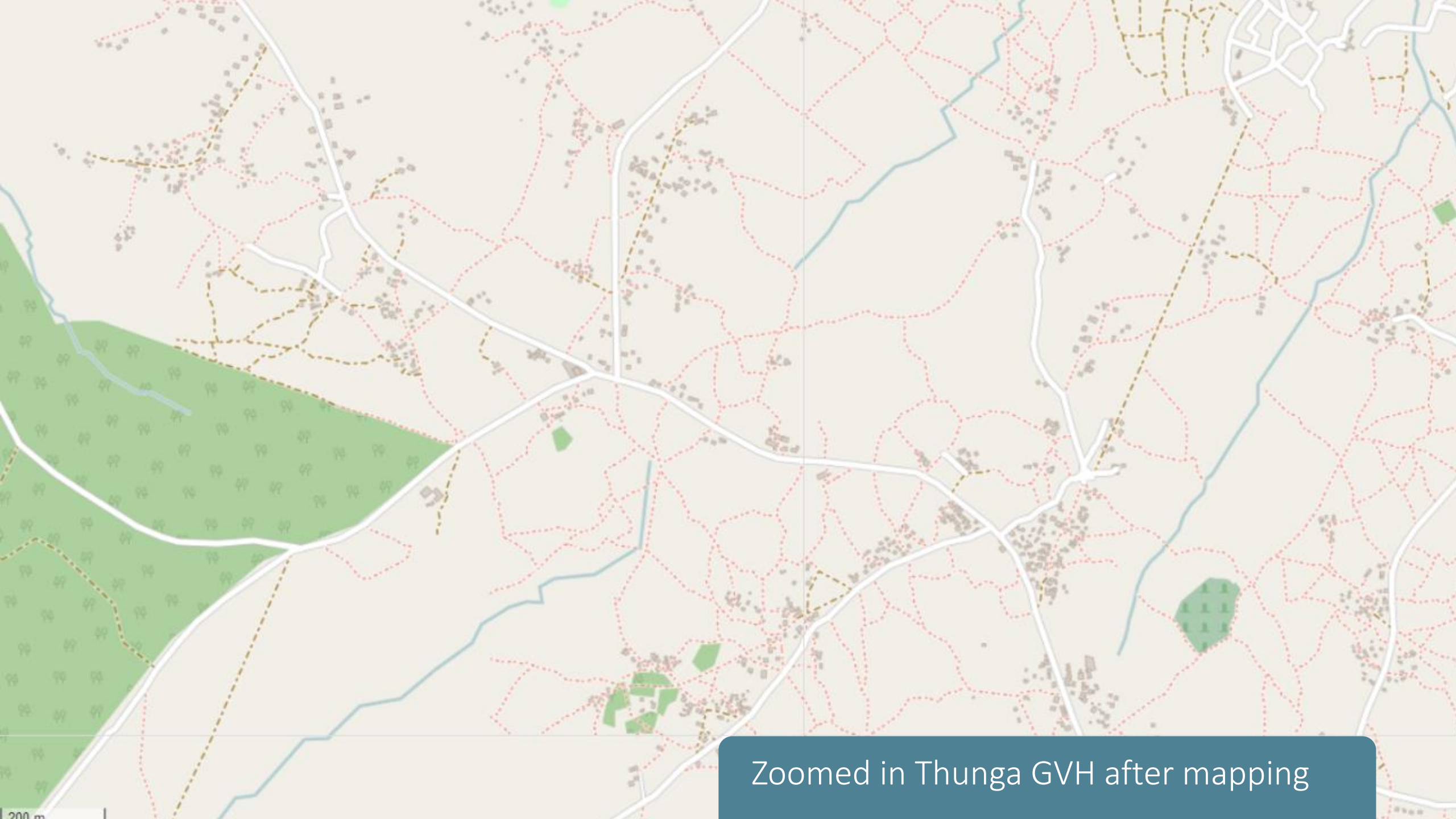




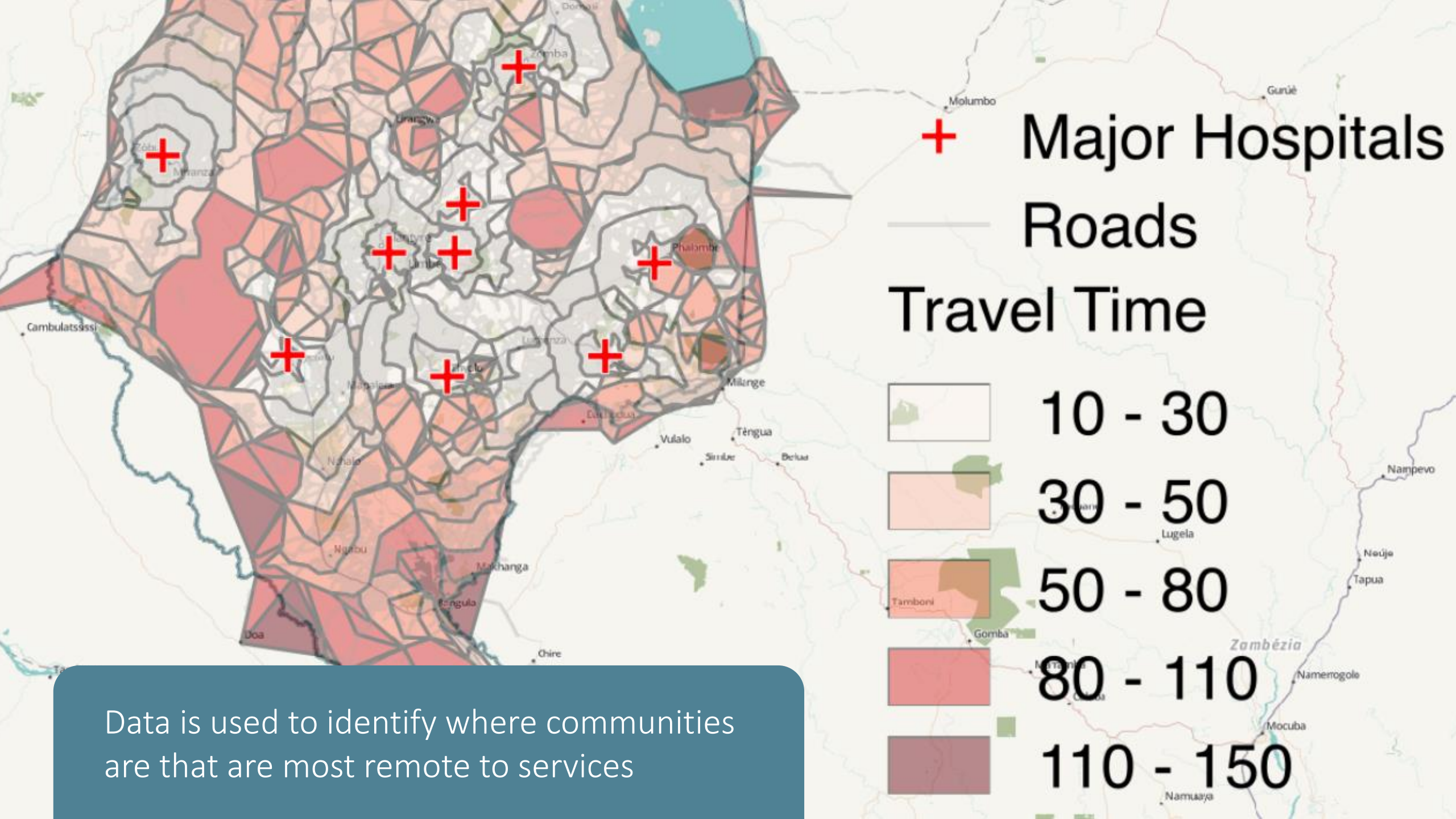
And with camera's mounted
on the car



Resulting in a street view of the area, which is then digitized by our volunteers



Zoomed in Thunga GVH after mapping

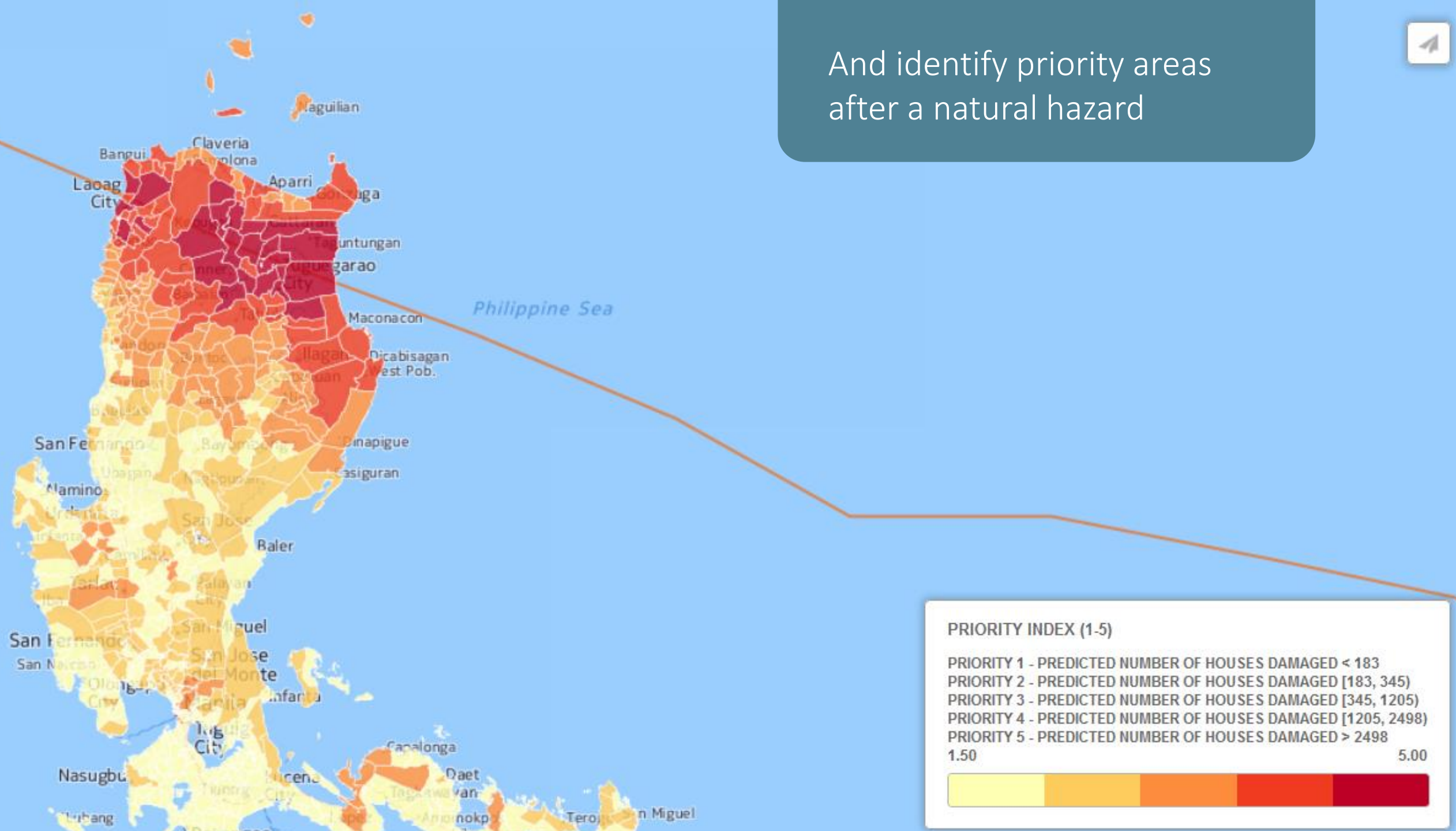


Data is used to identify where communities are that are most remote to services



To improve logistics
and navigation in disaster relief

And identify priority areas
after a natural hazard



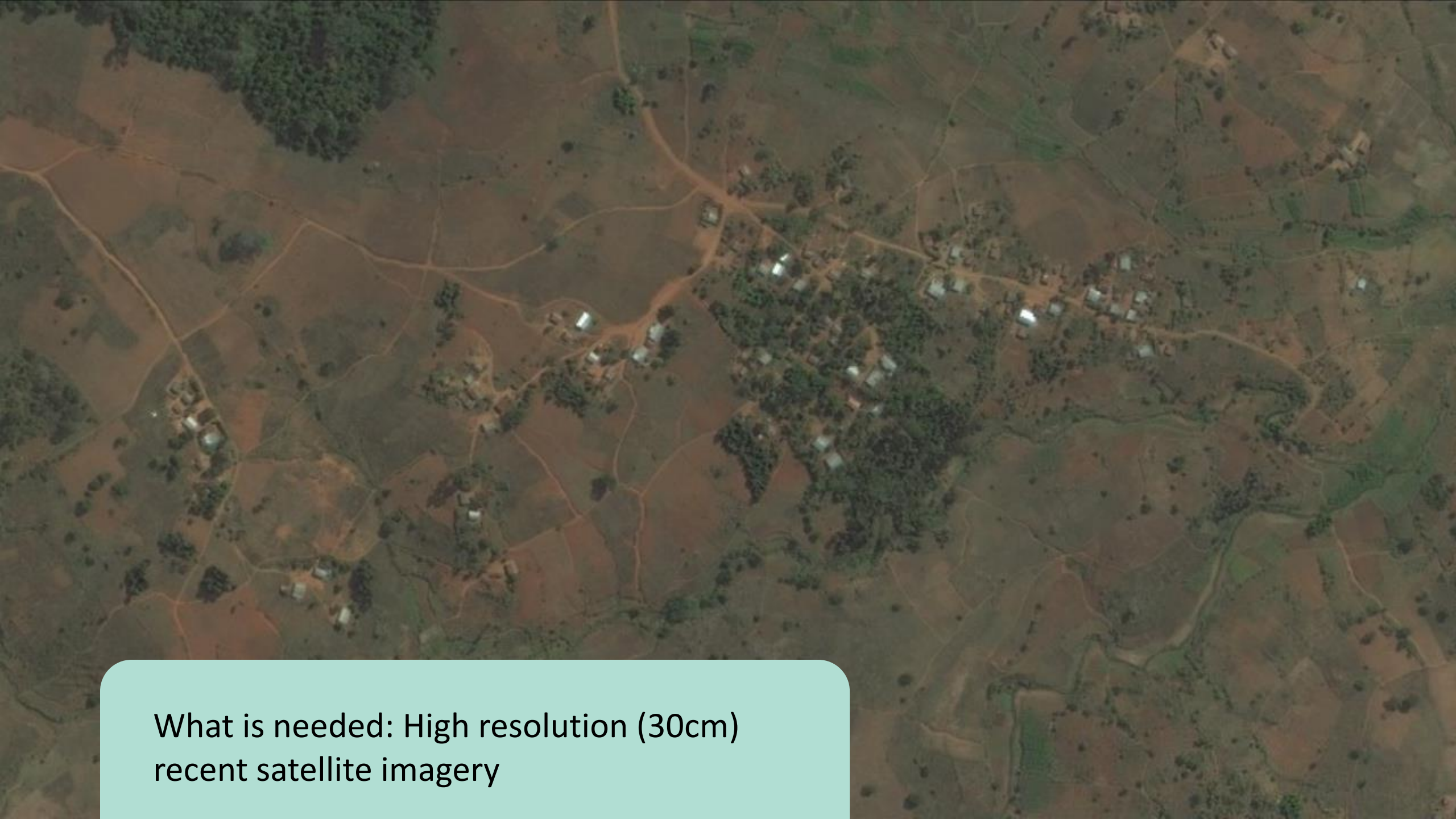


What is needed: Road classification and tagging guidelines



And decision makers are supported to use the data

What is needed: Coordination who is mapping where and what is responsible



What is needed: High resolution (30cm)
recent satellite imagery

CONTACT US



Leeghwaterplein 27
2521CV, The Hague, The Netherlands



info@510.global



twitter.com/510global



facebook.com/510global



AN INITIATIVE OF THE NETHERLANDS RED CROSS